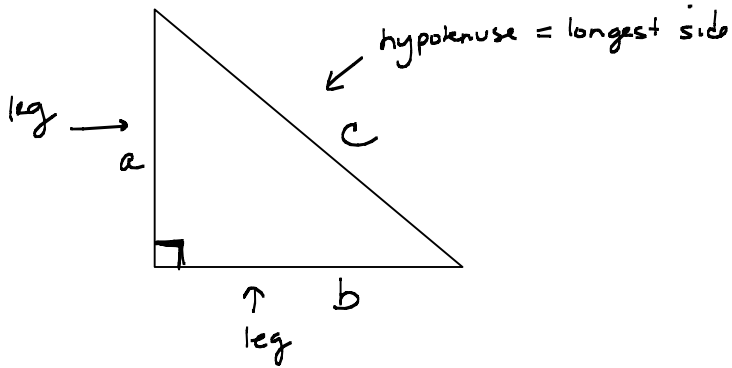


Section P.7 The Pythagorean Theorem

Objective

- To know and apply the Pythagorean Theorem

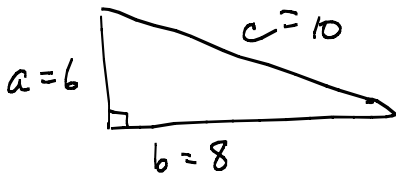


Pythagorean Theorem: $a^2 + b^2 = c^2$

This works only for right triangles!

Example: Find the hypotenuse of the right triangle given the lengths of its legs.

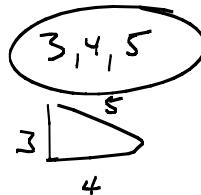
$a = 6, b = 8$



$$a^2 + b^2 = c^2$$

$$6^2 + 8^2 = 36 + 64 = 100 = c^2$$

$$10 = c$$



Example: Find the hypotenuse of the right triangle given the lengths of its legs.

$$a = 8, b = 15$$

Homework: Section P.7: 27 – 33 (odd)